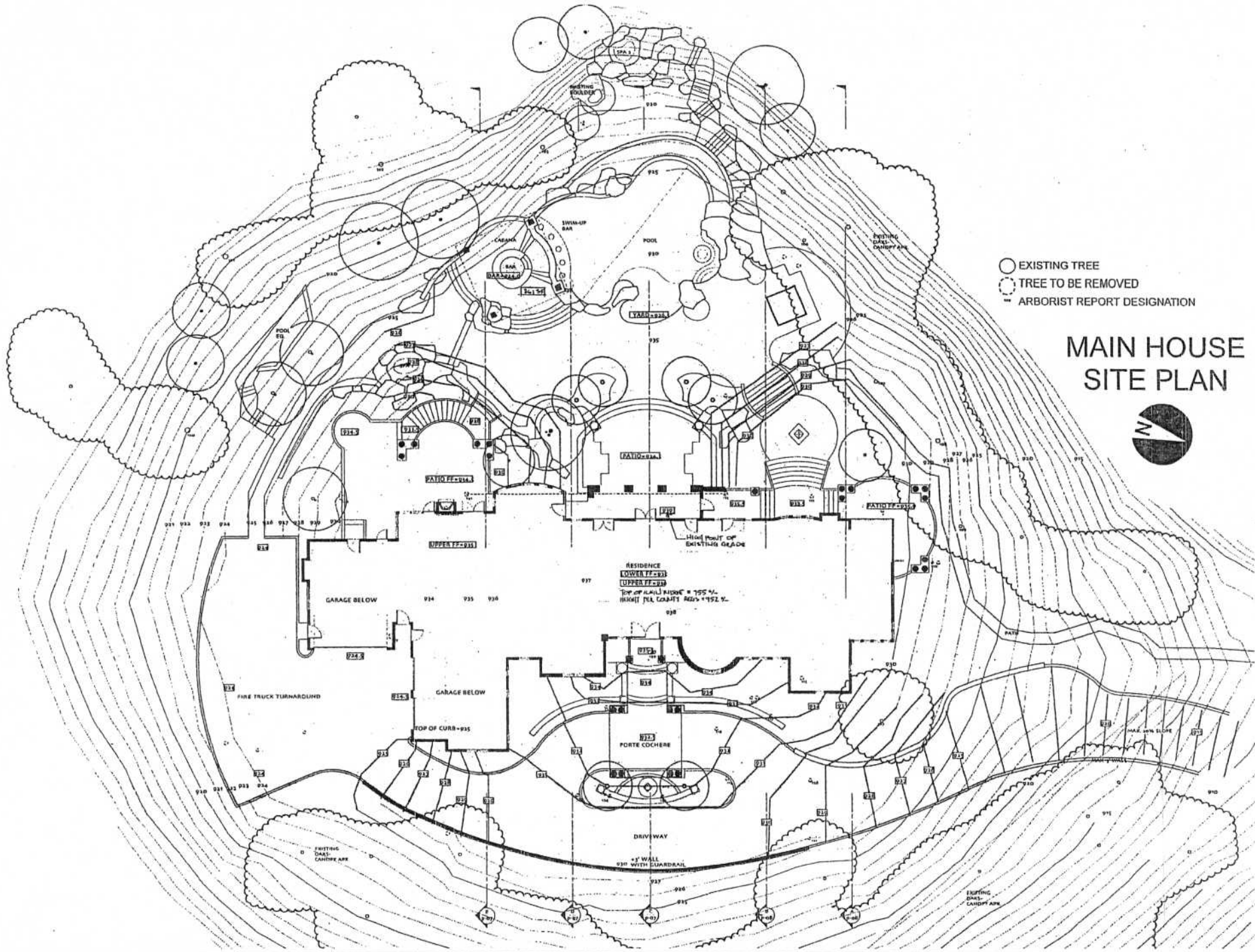


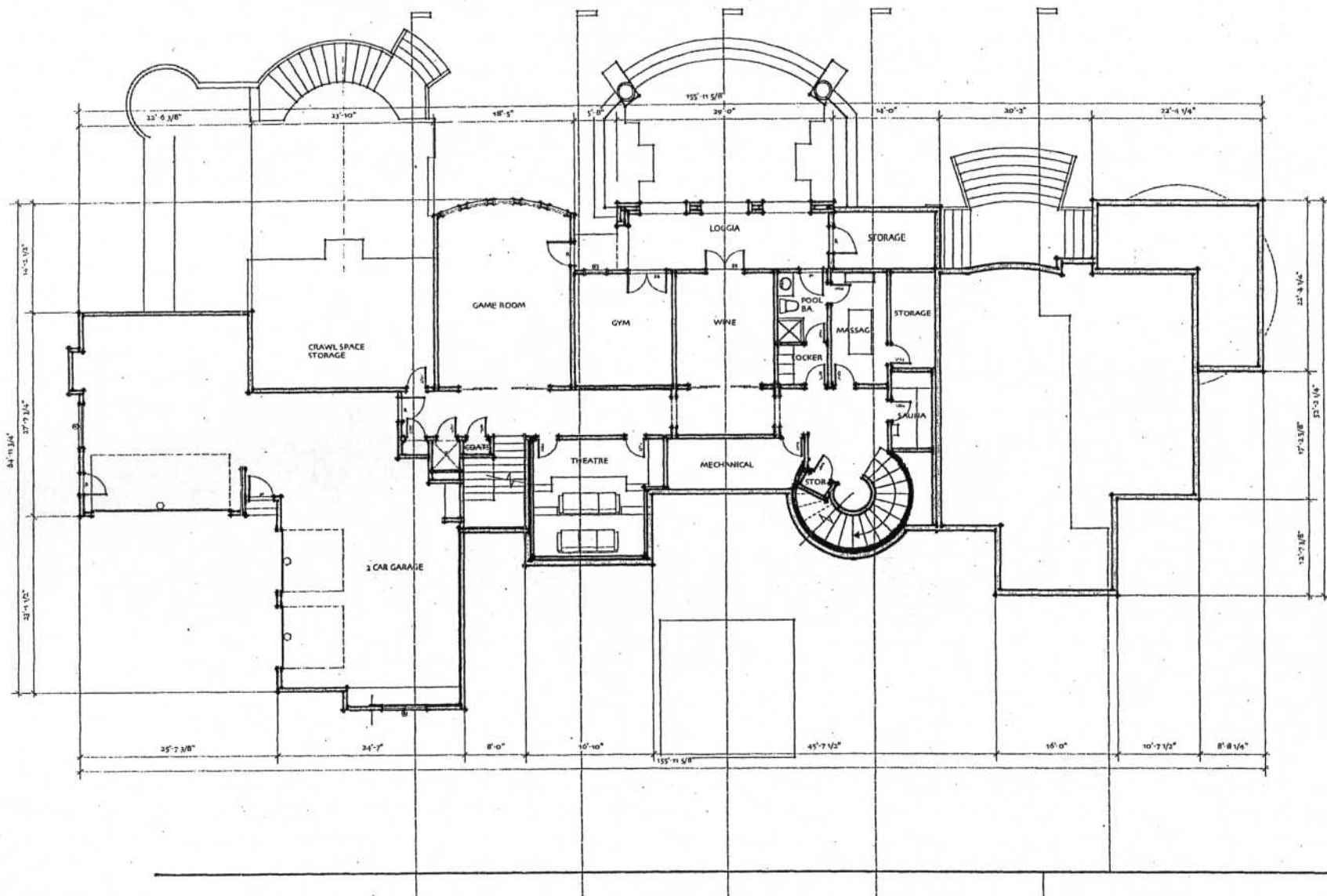
49



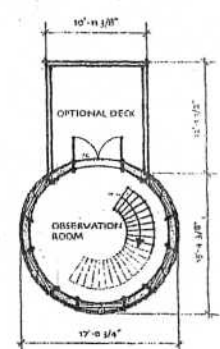
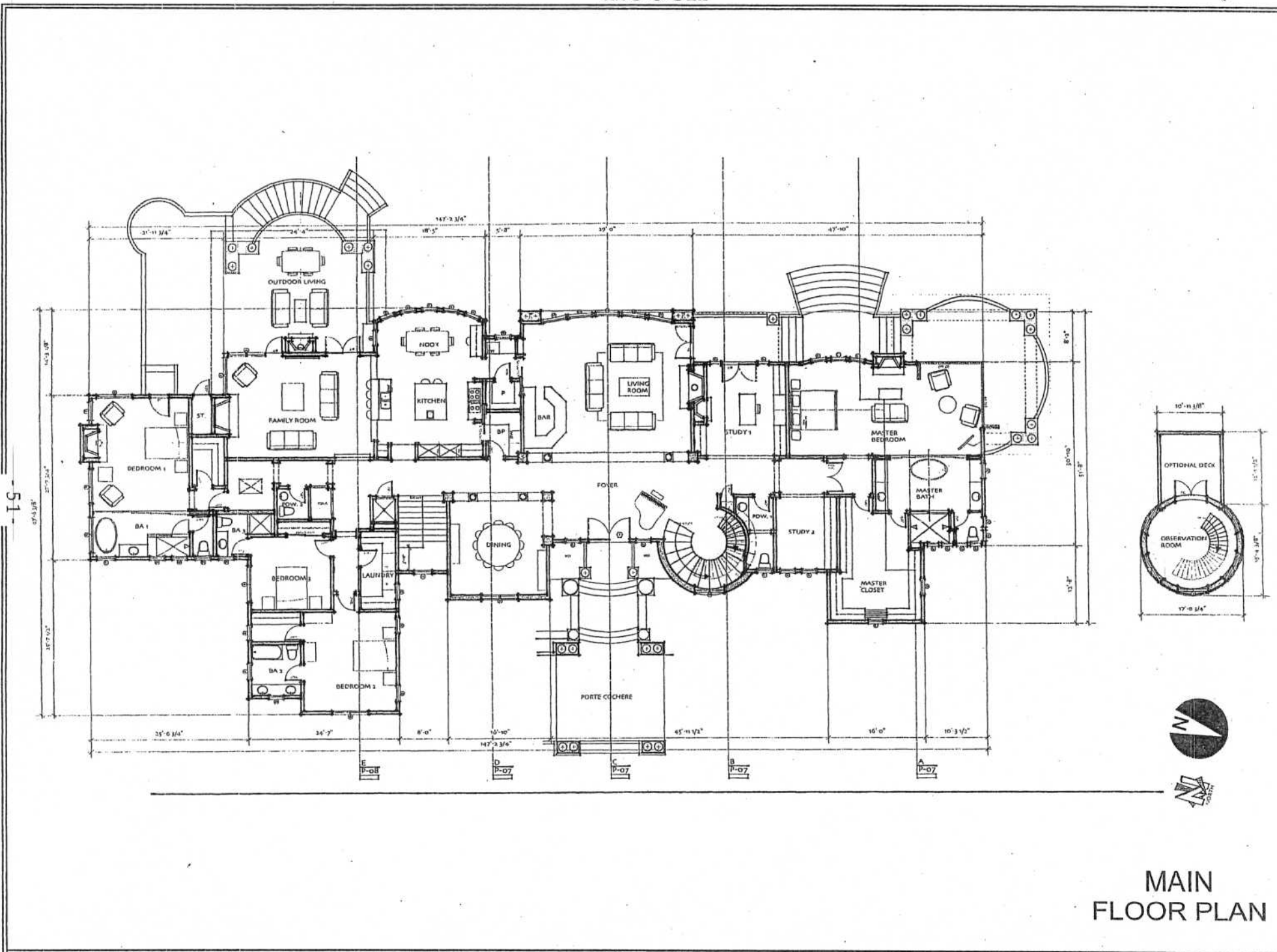
MAIN HOUSE SITE PLAN



- 50 -



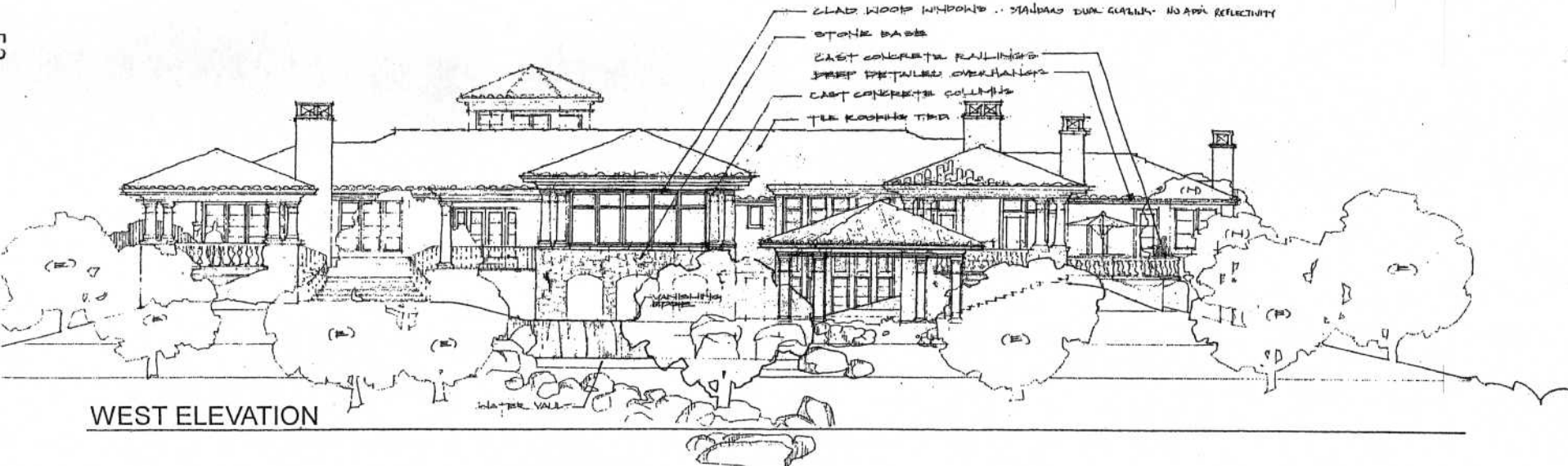
LOWER FLOOR PLAN



MAIN FLOOR PLAN



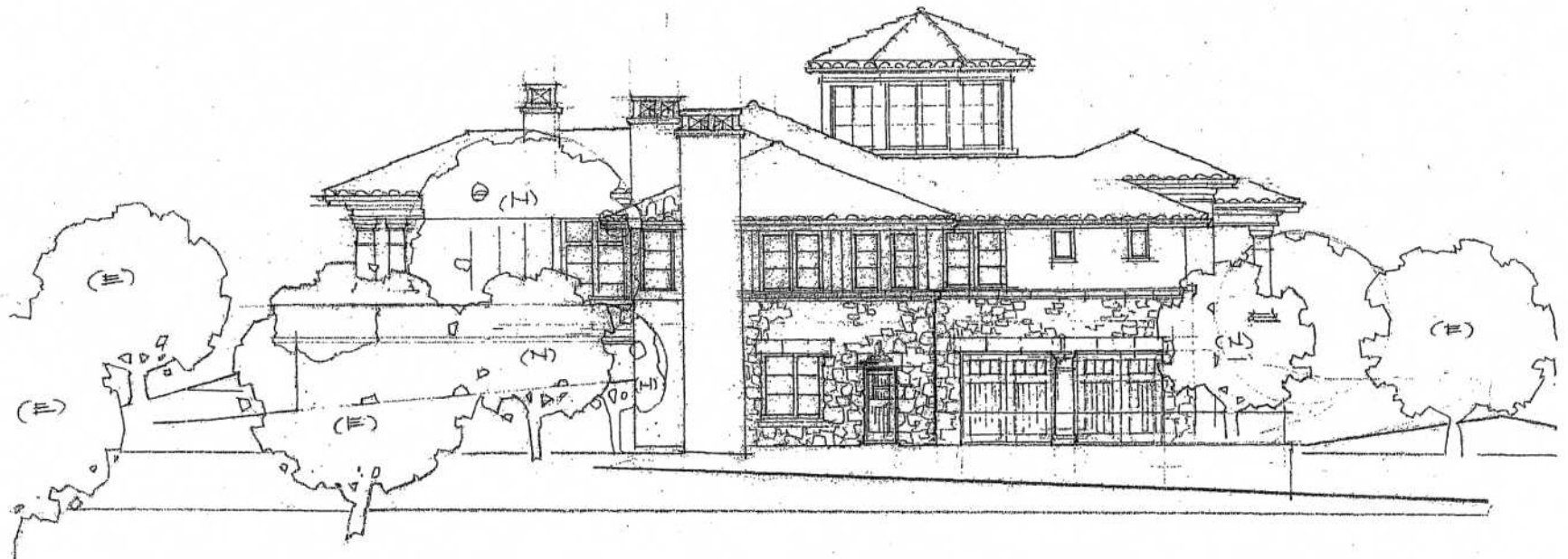
EAST ELEVATION



WEST ELEVATION

- GLAZED WOOD WINDOWS - STANDARD DARK GLAZING - NO APPLICABLE REFLECTIVITY
- STONE BASE
- CAST CONCRETE RAILINGS
- CAST CONCRETE OVERHANGS
- CAST CONCRETE COLUMNS
- TILE ROOFING TYPED

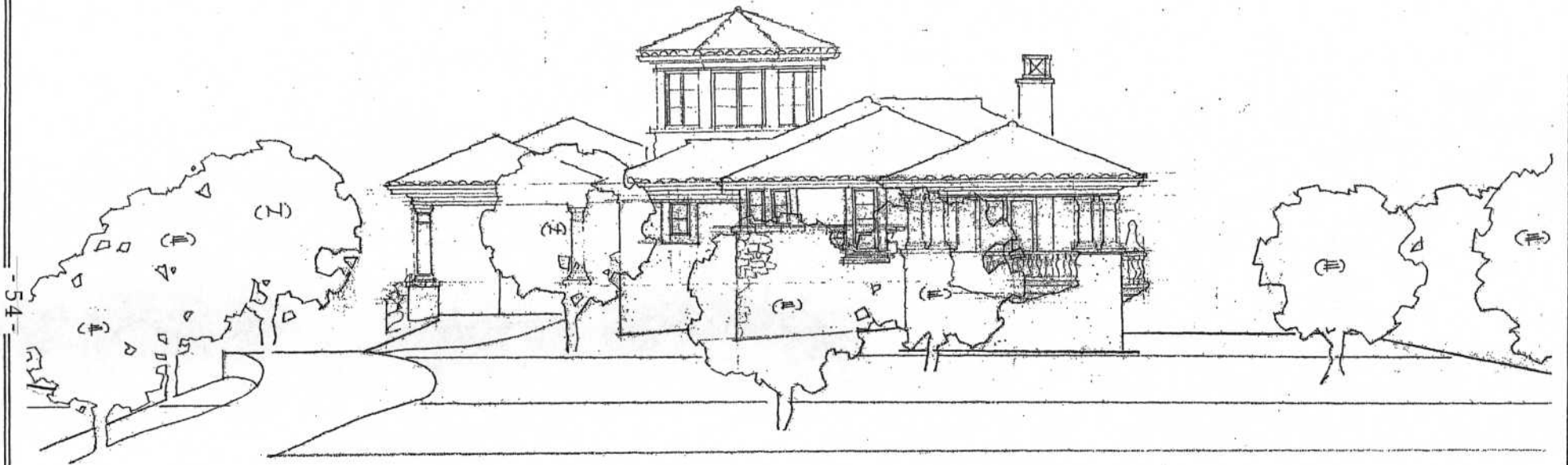
52



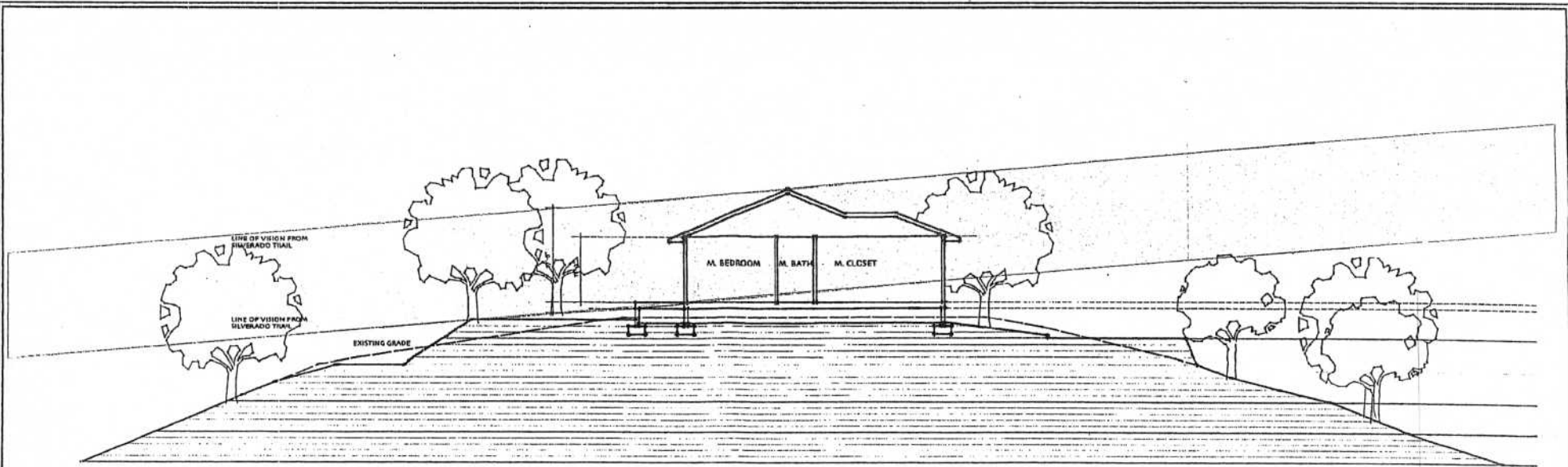
SOUTH ELEVATION

- 53 -

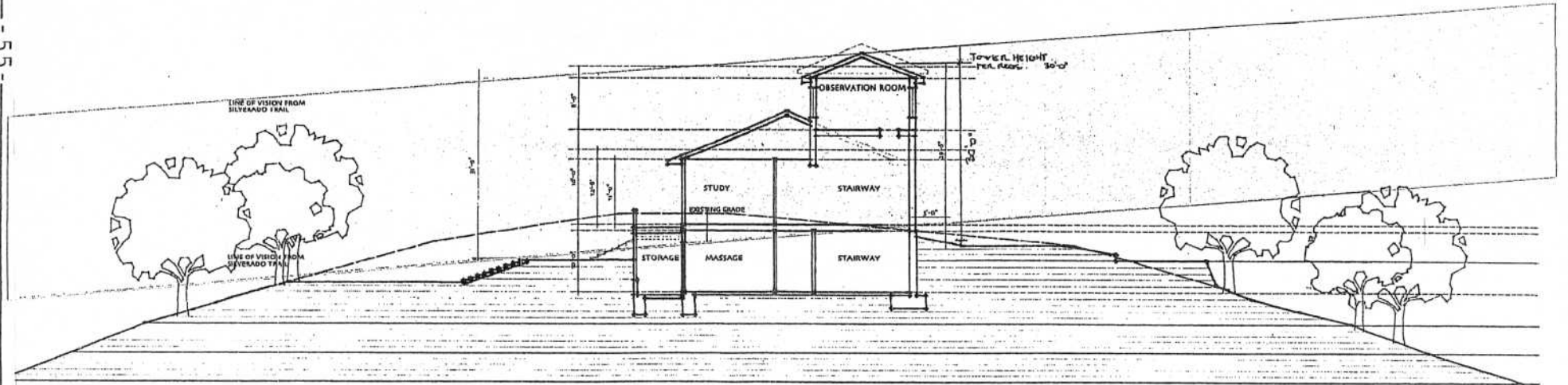
HOUCK



NORTH ELEVATION



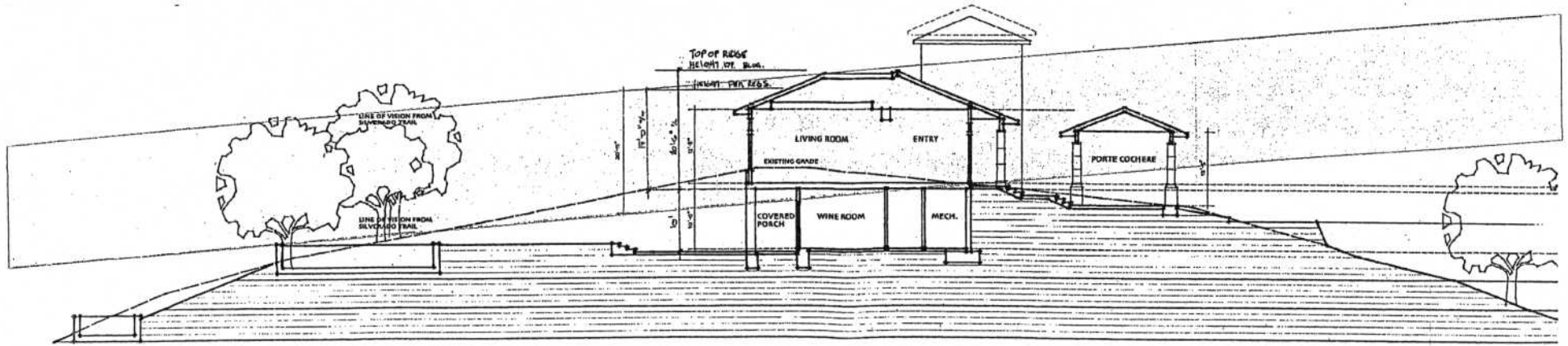
SECTION - A



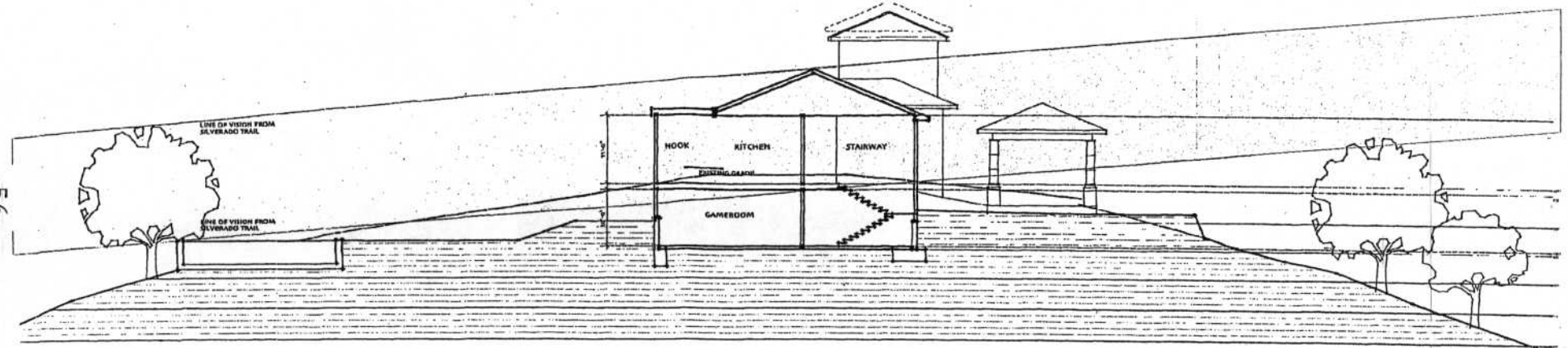
SECTION - B

LINE OF VIEW SECTIONS
(LINE OF VIEW FROM SILVERADO TRAIL)

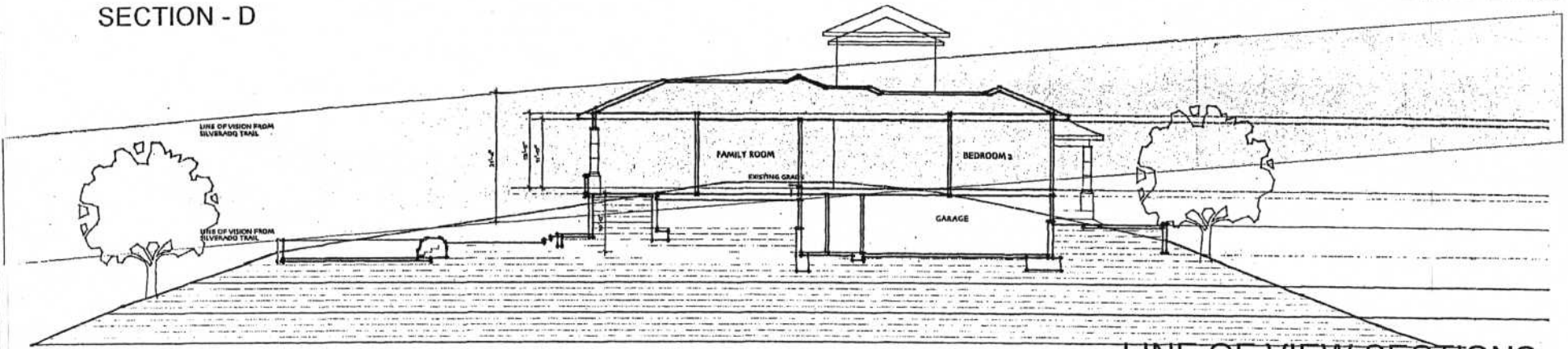
HOUCK



SECTION - C

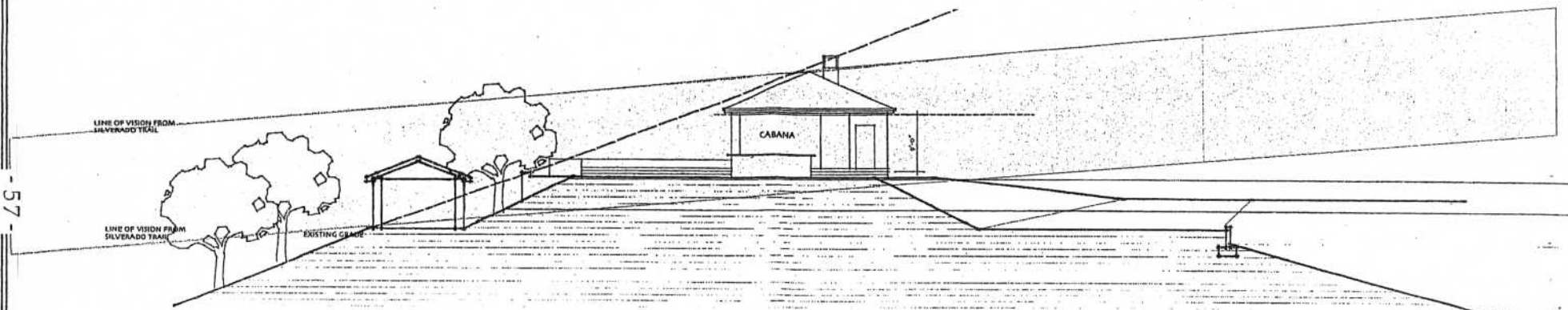


SECTION - D



SECTION - E

LINE OF VIEW SECTIONS
(LINE OF VIEW FROM SILVERADO TRAIL)

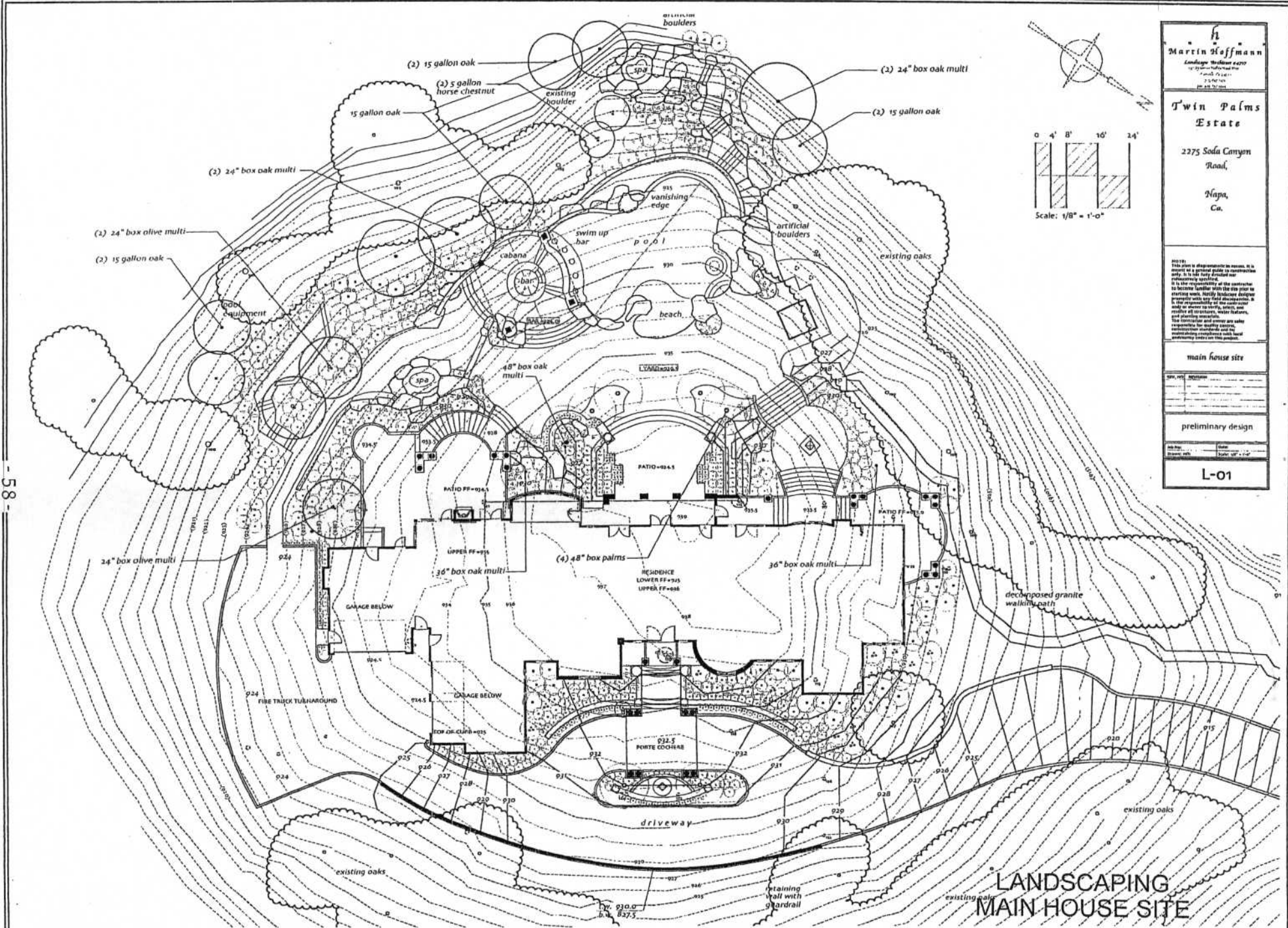


- 57 -

SECTION - F

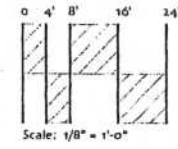
LINE OF VIEW SECTIONS
(LINE OF VIEW FROM SILVERADO TRAIL)

HOUCK



Martin Hoffmann
 Landscape Architect #277
 15 22nd Street, Suite 200
 Napa, CA 94559
 707.251.1111
 Fax: 707.251.1112

Twin Palms Estate
 2275 Soda Canyon Road,
 Napa, Ca.

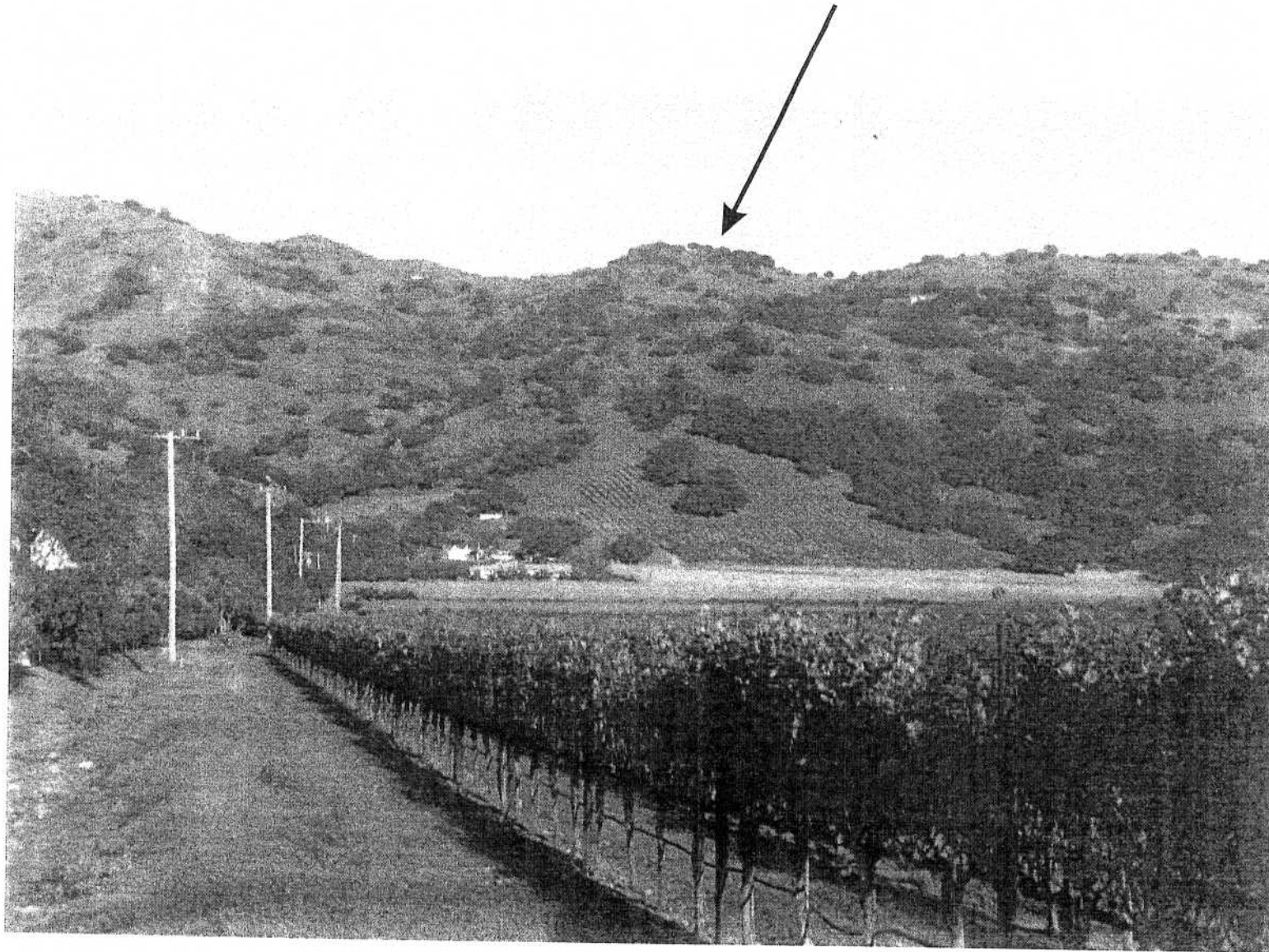


NOTES:
 This plan is preparatory to a contract. It is subject to a general plan of construction and is not to be construed as a contract. It is the responsibility of the contractor to verify the location and depth of all utilities and to resolve all structural, water features, and planting conflicts. The contractor and owner are solely responsible for quality control, construction, and maintaining compliance with local permitting rules and regulations.

main house site	
DATE: 04/25/05	SCALE: 1/8" = 1'-0"
preliminary design	
DESIGNER: HOUCK	DATE: 04/25/05
L-01	

-58-

HOUCK



TWIN PALMS ESTATE - EXISTING VIEW FROM REGUSCI DRIVEWAY

HOUCK



VIEW FROM REGUSCI DRIVEWAY

HOUCK



CLOSE UP FROM REGUSCI

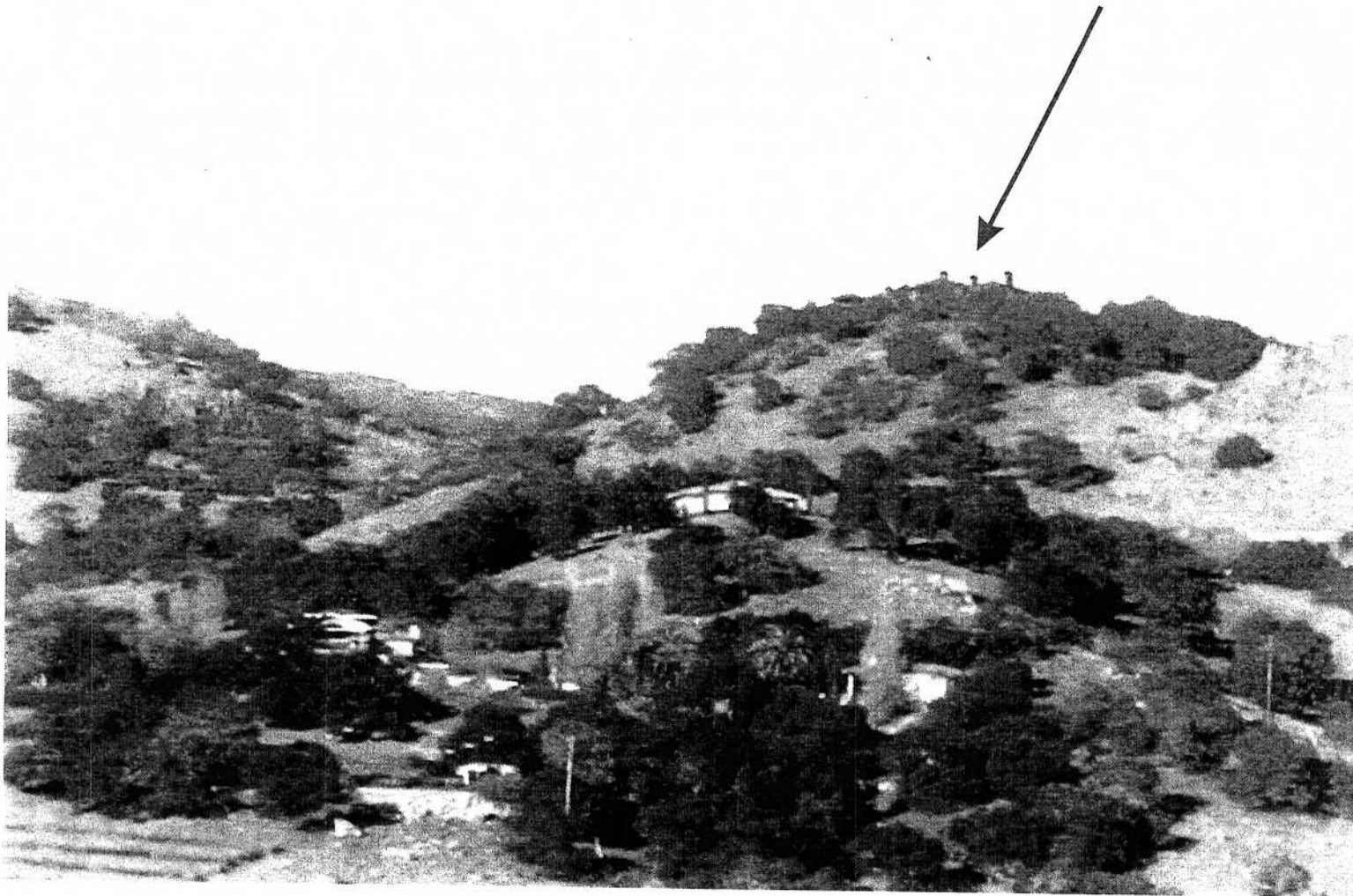
HOUCK



VIEW FROM CHIMNEY ROCK

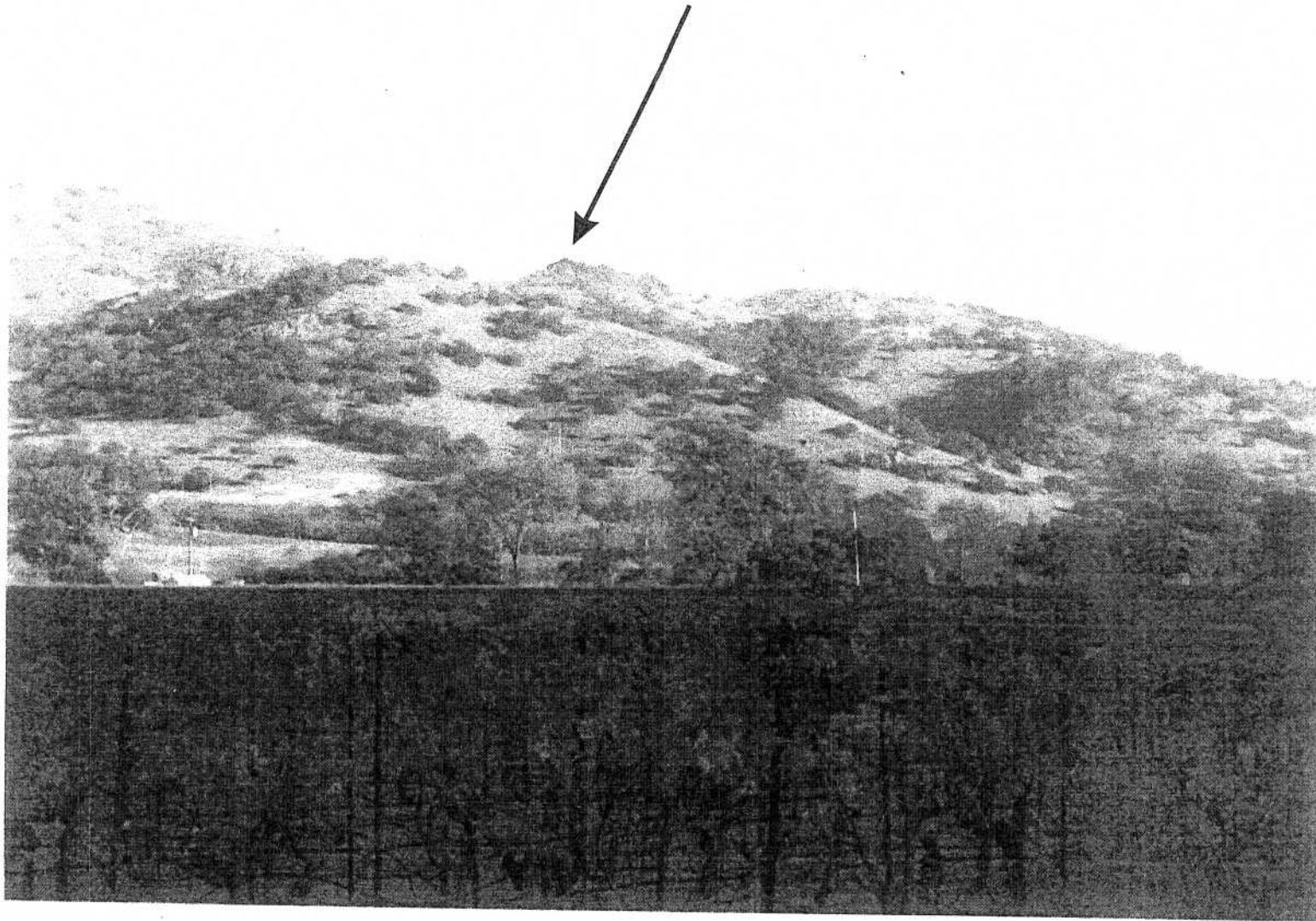
- 67 -

HOUCK



CLOSE UP FROM CHIMNEY ROCK

-69-



VIEW FROM PINE RIDGE

